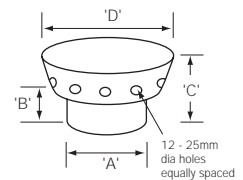
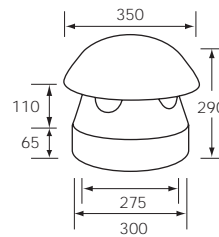
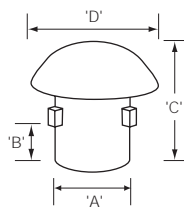
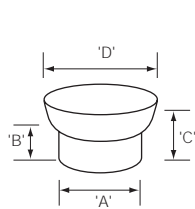
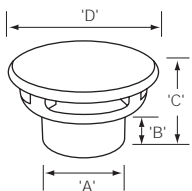
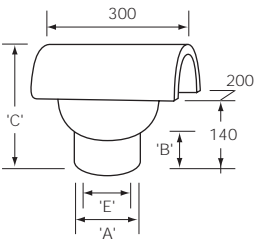
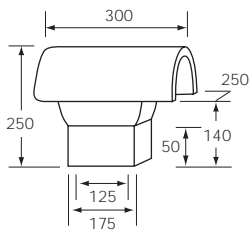


Inserts



103



117



119



30



116



118



120

list no.	description	spigot ext. dia.	spigot height	overall	hood width	spigot int dia.
		A	B	C	D	E
30*	Hood Top	135 dia 170 dia 190 dia 205 dia 235 dia	50 50 50 50 50	250 250 250 250 250	200 dia 200 dia 200 dia 200 dia 250 dia	100 dia 125 dia 145 dia 170 dia 200 dia
103*	Hood Top (Square Spigot)			see illustrated detail		
116*	Weatherguard Top	135, 170 dia 190, 205 dia	85 85	170 170	235 dia 285 dia	- -
117*	Blank Stopper	135 dia 170, 190, 205 dia	40 70	75 125	185 dia 250 dia	- -
118*	Mushroom Top	190 dia 205 dia	100 100	280 300	300 dia 300 dia	- -
119*	Mushroom Top (Outside Fitting)			see illustrated detail		
120*	Flue Ventilator	135, 190, 205 dia 235 dia 170 dia	55 70 55	175 175 175	275 dia 325 dia 250 dia	- - -

*see notes on pages 26 and 27 regarding limited application.

Please Note:
 Inserts are suitable for ventilation only. Not suitable for any live appliance. This includes gas, solid fuel and oil.
 List No. 117 does not provide ventilation.
 Fitting Recommendations:
 Inserts to be mortar bedded to top of chimney pot to provide a weather seal.